

SUNWARD

Operation weight : 45800KG
Bucket capacity : 1.80~2.20m³



SWE470E LARGE HYDRAULIC EXCAVATOR

SUNWARD INTELLIGENT EQUIPMENT CO.,LTD

Add: Sunward Intelligent Industrial Park, Xingsha, Changsha, 410100, China

Tel: 0086-731-8357 2828

Fax: 0086-731-8357 2661

Web: <http://www.sunward.com.cn>

E-mail: international@sunward.com.cn; info@sunward.cc

P.C.: 410100

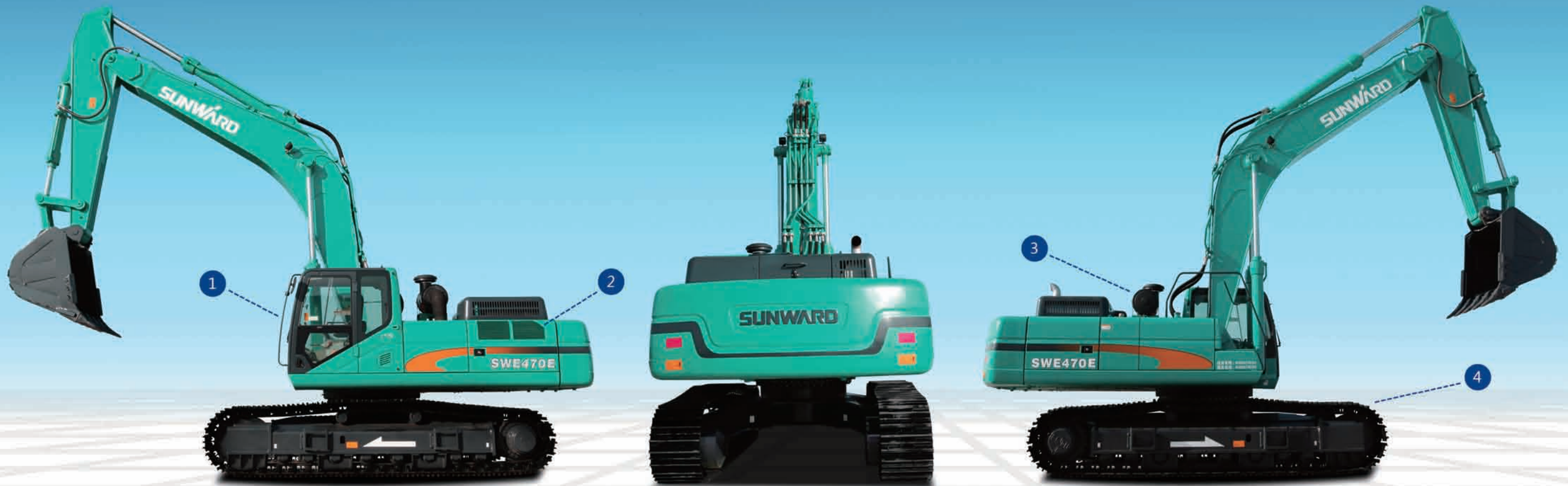
Please read the manual book and maintenance book before operation, changes are periodically added to the information, and Sunward may change the products or services described in this book at any time without announcement. All rights of this manual book reserve to Sunward. SUNWARD Internal Use Only

Sunward Excavator Full-Series Upgraded
E-Generation energy conservation expert
Glorious Come to market

Condensation power of wisdom, continually writing legend of technical research, E-series excavator inherits of Sunward sophisticated technology and craft. Catering to the market demand, optimizing matching control system, Sunward excavator perfectly presents 5E performance, and opens an excavator benchmarking era of "Three High and One Low"!

"Three High and One Low" :
High configuration, High efficiency, High reliability, Low fuel consumption

MINING MARS SERIES
SWE 470E



1 Hydraulic system adopts multiple priority loop



2 Paraxis radiator



3 Easy maintenance for Air filter and other component



4 Reinforced working device and frame as standard configuration

Higher cost performance than other same tonnage excavator

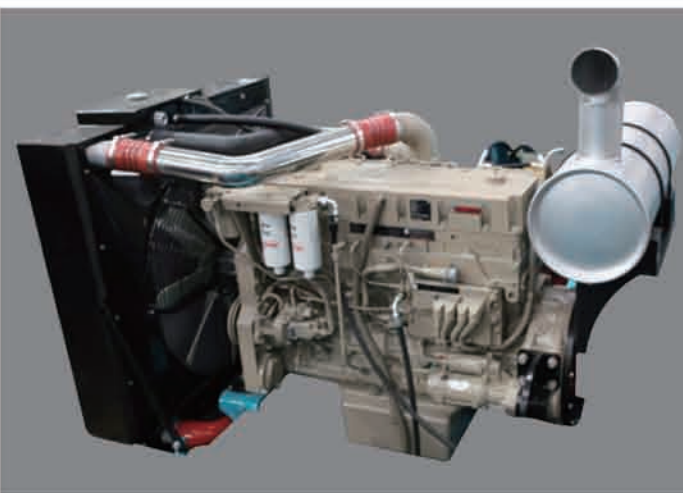
Strong launched 470E mining excavator, high-end configuration, advanced technology support, specially oriented in mining working condition, the overall configuration and more cost-effective than other same tonnage excavator!

Performance feature, advantage of technology

High-level Configuration, Advanced technology

◆ Import Engine

Use imported Cummins turbocharged inter-cooled six-cylinder diesel engine, strong power, long life time



◆ Hydraulic and control system

Using more powerful KYB-B series main valve, Kawasaki large displacement main pump, swing motor and KYB traveling motor and other international first-class brand component, working efficiency high, better composite operation ability.



◆ Control system automatically set the function of boosting

When faced with big resistance, the system will automatically improve the overflow pressure, increase the digging force



◆ Bilingual in English and Chinese colorful LCD display

Anti-glare type color LCD display, which can clearly display in bright light

◆ Easy operational joystick for realizing quick movement



◆ Three working models

"H" Mode: Heavy duty, high working efficiency ; "L" Mode: Light duty, priority of low fuel consumption
"S" Mode: Medium duty, combination consideration of working efficiency and fuel consumption ;



◆ Adopt international famous brand for full automatic air conditioning system

Adjust indoor temperature, wind volume to the best status automatically when using, quick cooling and heating

◆ New type of multi-functional radio

Touch screen control, MP3 play function, USB interface and the expansion of SD card

Comfort, Safe, Convenient Operation



- Cab use six silicone oil shock absorber supporting, better shock absorption effect, ensuring that feeling of driver is comfortable

The latest ergonomic design and decoration, operator doesn't get tired even if long work time. Use broad-vision cab by pressurization, large operation space, wide view, and sound insulation effect is more ideal.



- Luxurious cab – Conform to the European ROPS/FOPS standard

Prevents damage from the top and side, provides more security for the operator. Broad vision in front of cab, blind vision spot sink to the minimum, reach to a highest job security.



• life-saving hammer

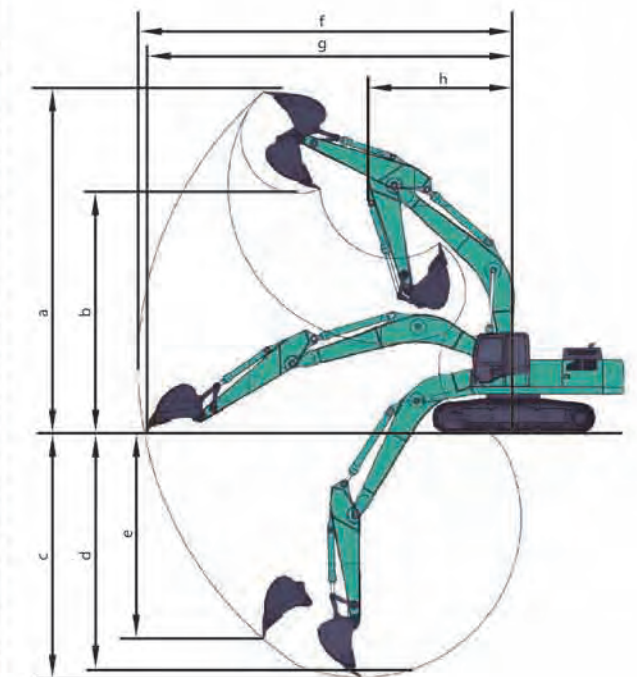
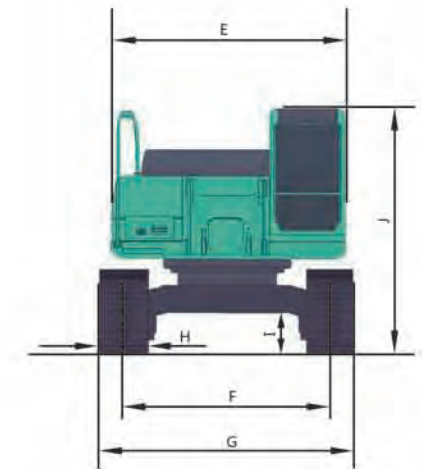
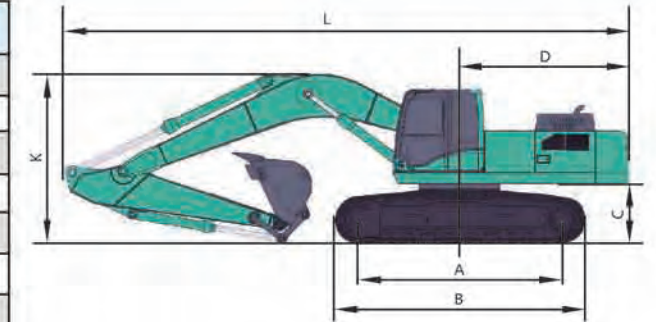
• Water cup position

• Hand sanitizer holder

• fire extinguisher

Basic Parameter

Parameter	Model	SWE470E
Operation weight with steel crawler	T	45.8
Standard bucket	m ³	2.20
Bucket digging force	KN	305
Arm digging force	KN	228
Gradeability	°	35
Traveling Speed(Max/Min)	Km/h	4.8/3.0
Swing speed	rpm	8.6
Engine	Brand	Cummins
	Model	QSM11-335
	Type	Electrical injection, 6 cylinder, water-cooled, 4 stroke
	Displacement	L
Power/RPM	kw/rpm	263/1900
Fuel Capacity	L	650
Main pump	Type of pump	2×PLUNGER PUMP
	Displacement	L/min
Ground pressure	Kpa	83.5
Hydraulic Oil Tank Capacity	L	350



Overall Dimension(LxWxH)		mm	12050×3340×3665
Transportation dimension	A	Roller Base	mm 4350
	B	Crawler Length	mm 5355
	C	Ground Clearance Of Platform	mm 1270
	D	Tail Swing Radius	mm 3650
	E	Upper structure width	mm 3230
	F	Track gauge	mm 2740
	G	Chassis Width	mm 3340
	H	Track Width	mm 600
	I	Ground Clearance of Chassis	mm 550
	J	Overall Height Of Cab	mm 3155
Working Range	K	Boom Height by shipping position	mm 3665
	L	Shipping Length	mm 12050
	a	Max. Digging Height	mm 10885
	b	Max. Dumping Height	mm 7770
	c	Max. Digging Depth	mm 7775
	d	8 Feet Horizontal Digging Depth	mm 7550
	e	Max. Vertical Digging Depth	mm 6800
	f	Max. Digging Radius	mm 12095
g	Max. Reaching Level At Round	mm 11890	
h	Min. Swing Radius	mm 4860	